

Interior Design Studio Health Building

**[The Impact of Ceiling upon the perception of
interior spaces]**

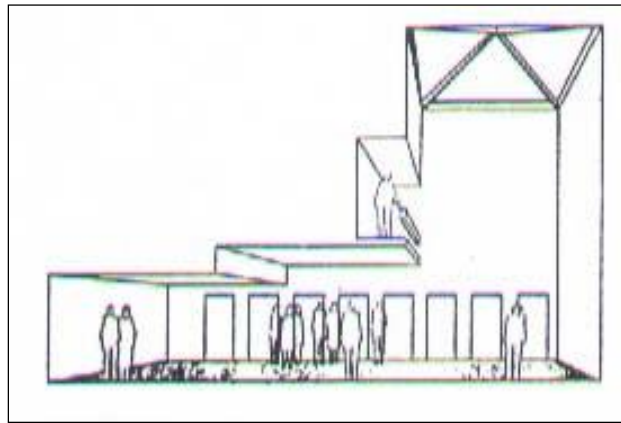
**Prepared by
M.Sc. Nazik Jamal
2018-2019**



Introduction

Ceilings play an important visual role in shaping the interior space and limiting its vertical dimension.

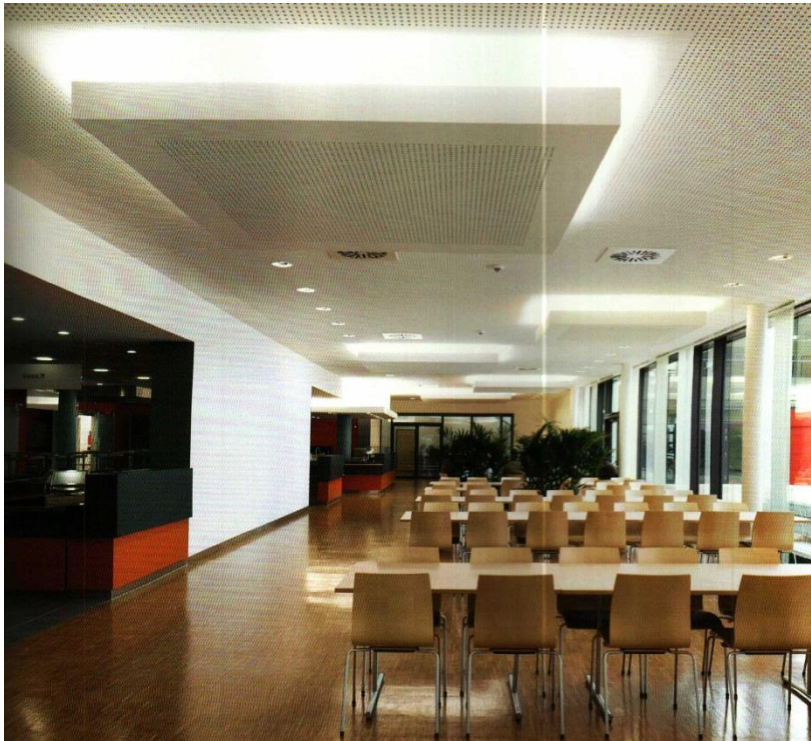
It is the sheltering element of interior design offering both physical and psychological protection for those beneath its canopy.



Introduction



The ceiling material can be attached directly to structural frame or be suspended from it.



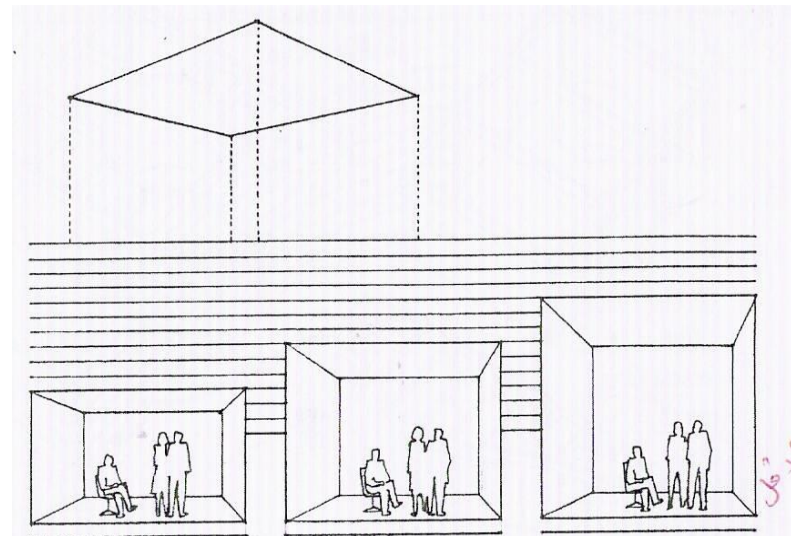
Height of ceiling



The height of ceiling had a major impact on the **scale of a space**. High ceilings tend to give space an open, airy, lofty feel.

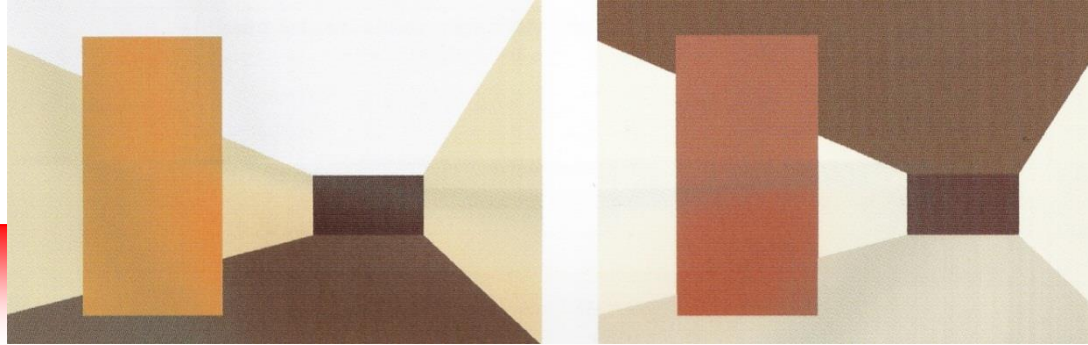
While, low ceilings, on other hand,, emphasize their sheltering quality and tend to create intimate, cozy spaces .

The normal height of a ceiling should be in proportion to a horizontal dimensional room and its use.





Ceiling Color



- The apparent height of a ceiling can be lowered by using a dark, color that contrasts with the wall color. While light values appear to recede.[value]



Ceiling Color

- The apparent height of a ceiling can be lowered by using a warm color that contrasts with the wall color. While cool color appear to recede. [hue]



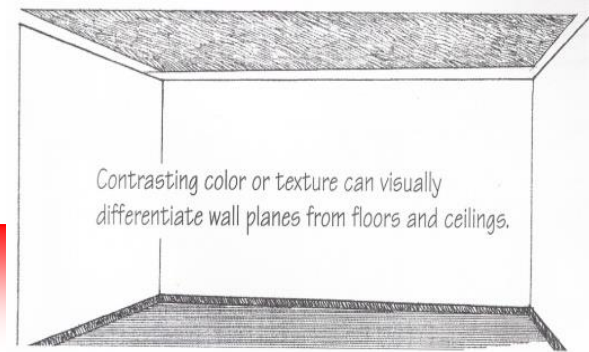
Ceiling Material

Carrying the ceiling treatment down lowers a wall's apparent height.

- The apparent height of a ceiling can be lowered by carrying the ceiling material or finish down on to the walls .



Ceiling Pattern



Any ceiling pattern will tend to attract our attention and appear to be lower than it is because of its visual weight.



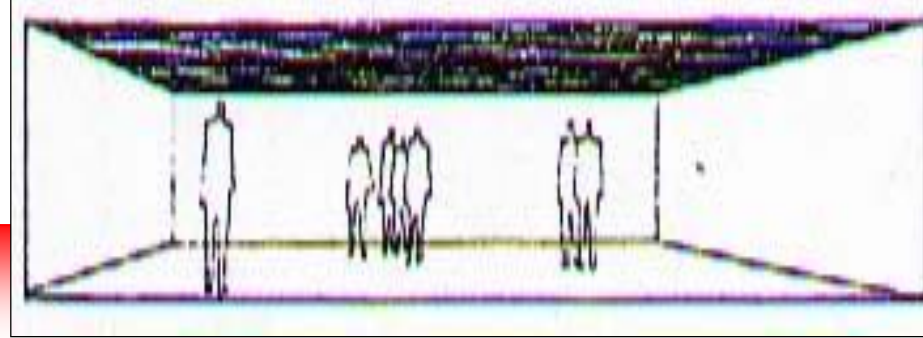
Linear Ceiling



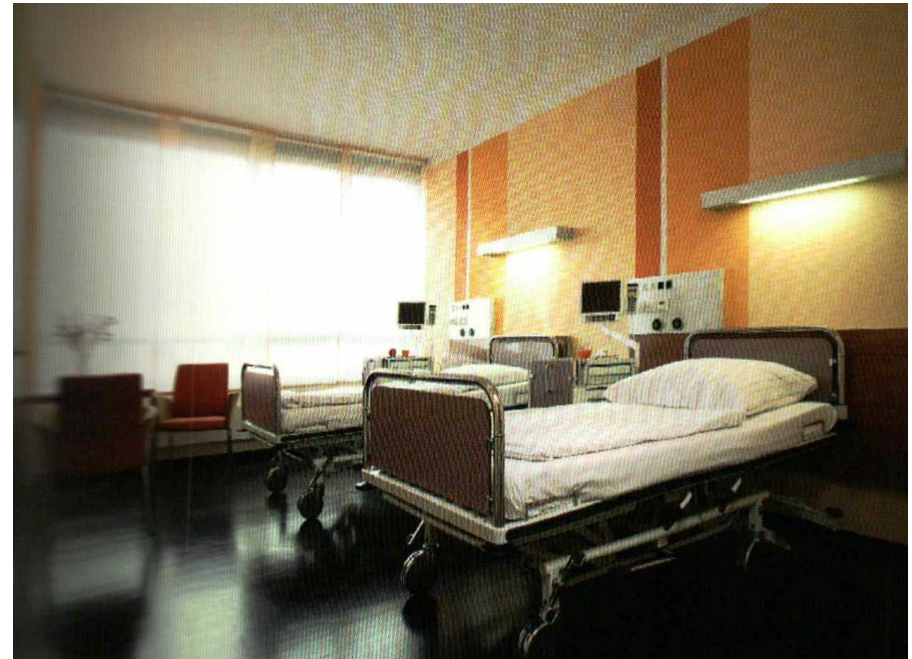
Any linear patterns direct the eyes which can also emphasize the dimension of space to which they are parallel.[Wider or Narrower]



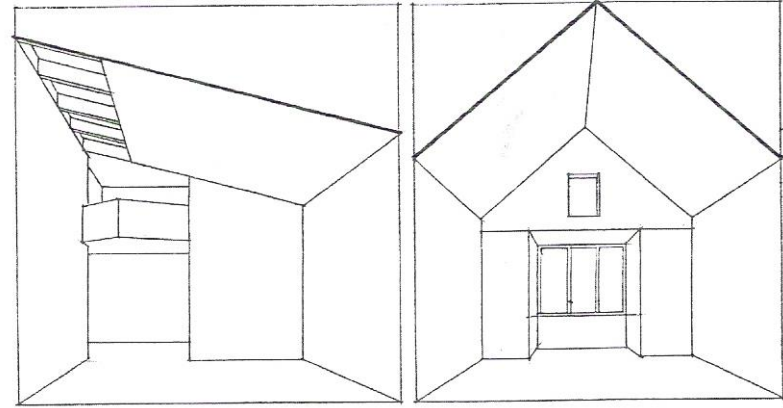
Flat Ceiling



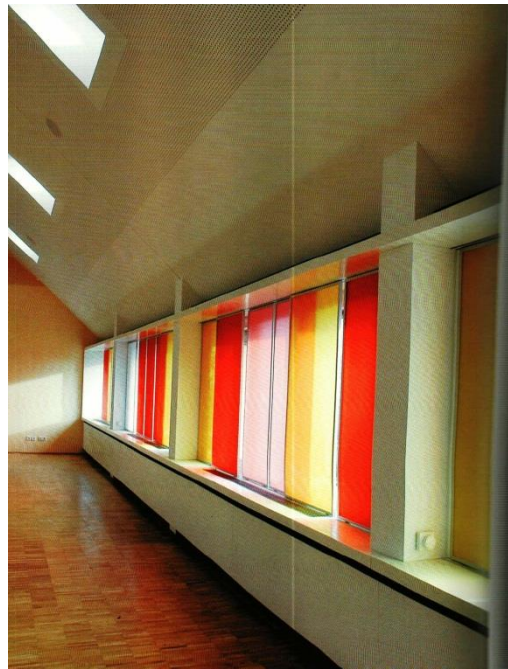
- Ceiling supported by a floor structure above are normally flat.



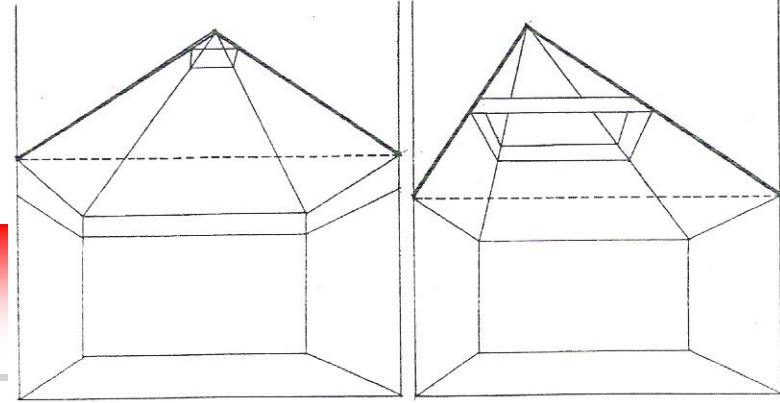
Gabled Ceiling



- Gabled ceilings expand space upward toward the ridge line and it may direct our attention to the height of the ridge or to its length.



Pyramid Ceiling

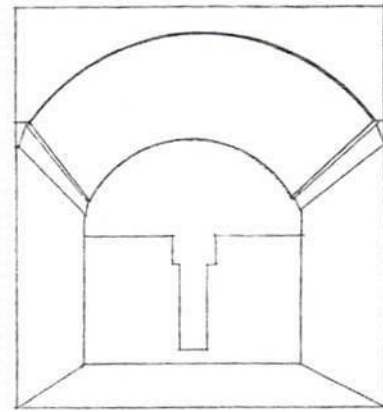


- **Pyramid ceiling directs the eye upward to its peak a focus that can be accentuated further with an illuminating skylight.**



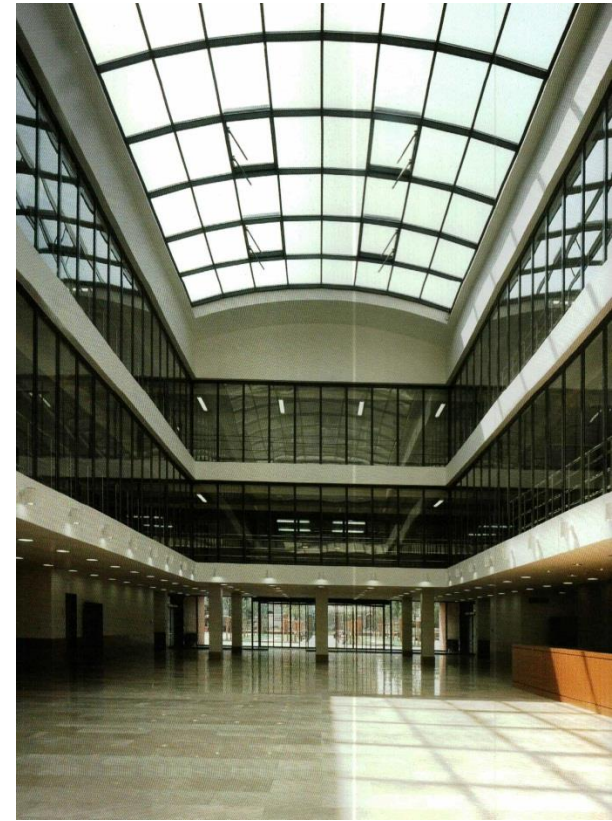
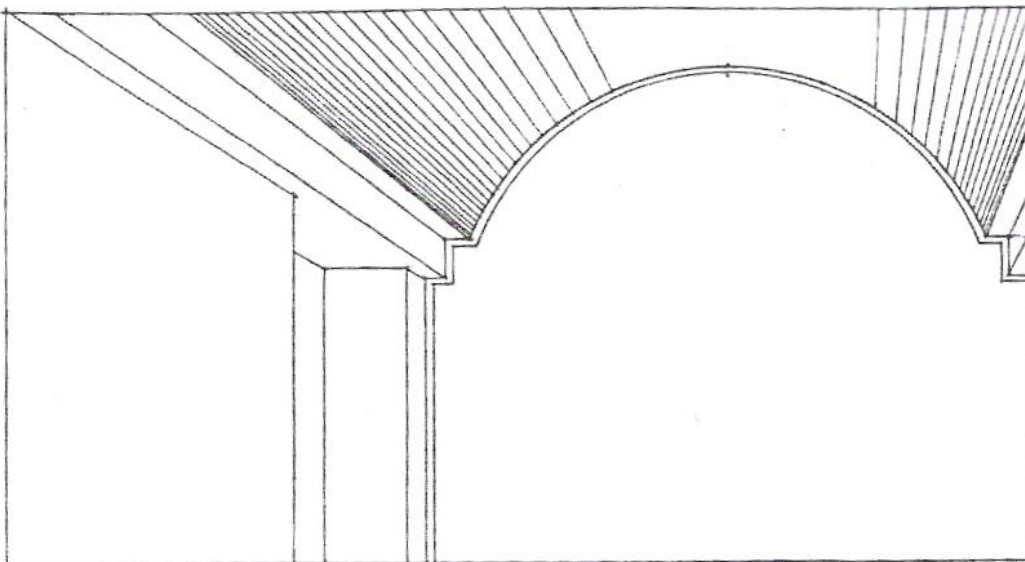


Vaulted Ceiling



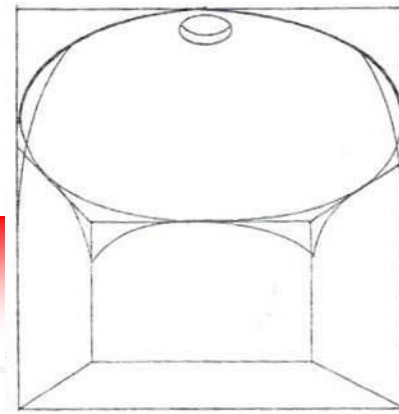
The coved ceiling uses a curved surface to soften its meeting with the surrounding wall planes and gives the enclosed space a plastic, moldable quality.

Vaulted ceiling directs our eyes upward and along its length.





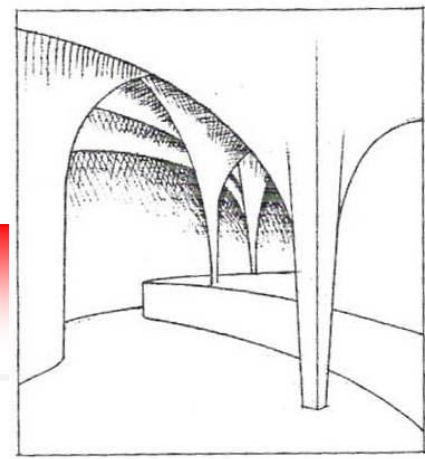
Dome Ceiling



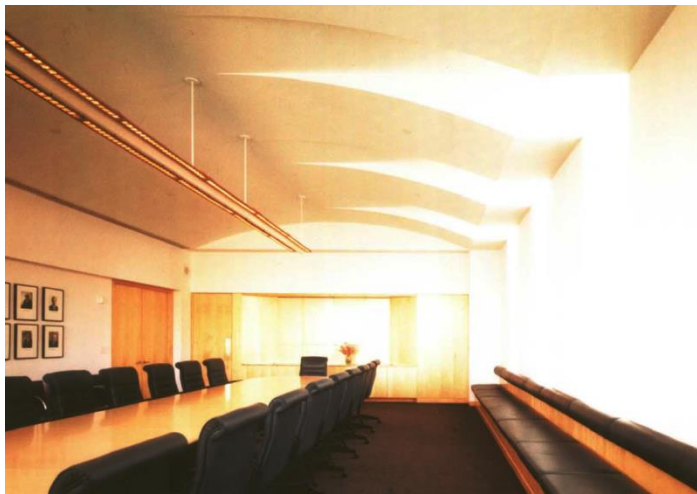
While dome ceiling which is a centralized form that expands space upward and focuses our attention on the space beneath its center.



Free Form Ceiling [curvilinear]

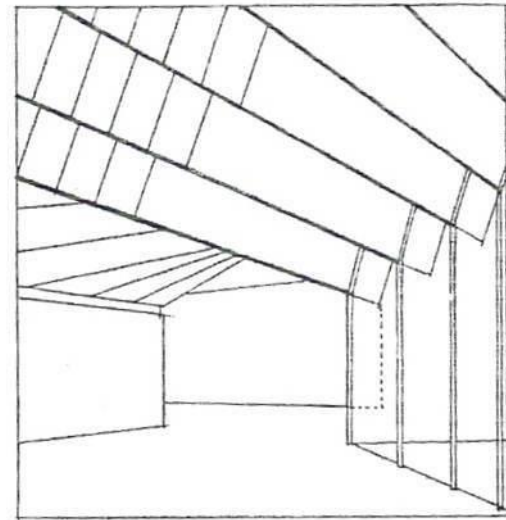


Free form ceilings contrast with the planar quality of walls and floors and therefore, attract our attention. Whether curvilinear or angular in nature.





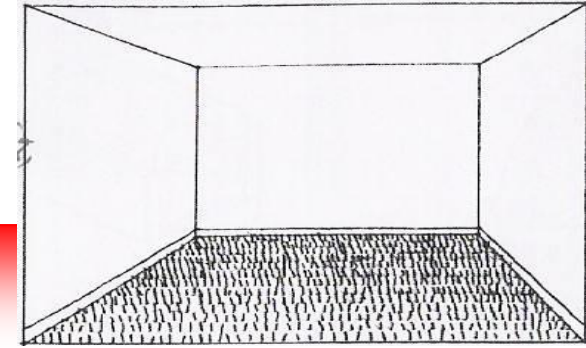
Free Form Ceiling [angular]



They are decorative and can often dominate the other elements of interior space



Floors



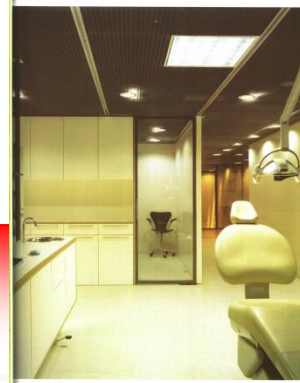
- Floors are the flat level base planes of interior space. As the platforms that support our interior activities and furnishings which must be structured to carry these loads safely and their surfaces must be durable enough to withstand continual use and wear .



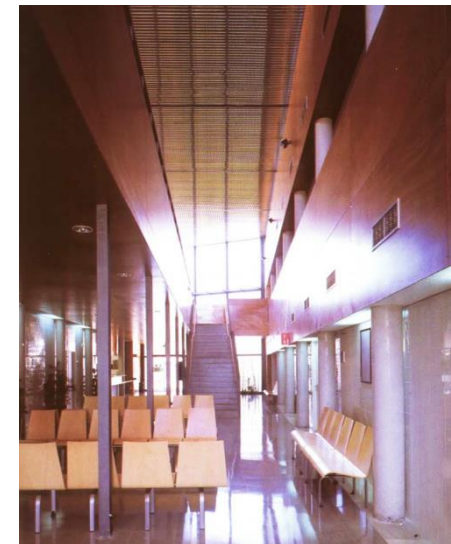
1 Registration
2 Main entrance
3 Elevation north-west



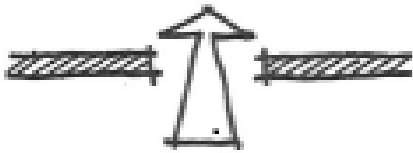
Floors



- The floor can through its color, pattern, and texture play an active role in determining the character of a space. Textured carpet will increase the sense of space. Absence of a pattern enlarges space. Accent rugs can be centers of interest.



Invitation / Rejection



Invitation

The way a facility (or a part of it) treats its boundaries and points of access may be open and inviting, providing wide and flowing connections between inside and outside.

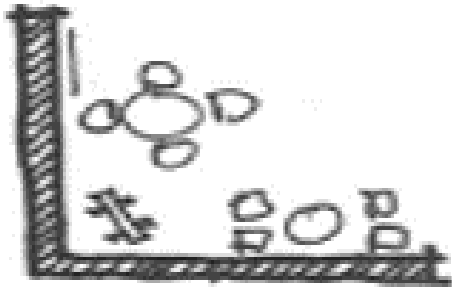


Rejection

The Users usually discourage or prohibit access to the Facility or parts of it. Think of a bank. You are welcomed up to the teller line but have no access to more private, back-of-the-house area, especially the main vault.

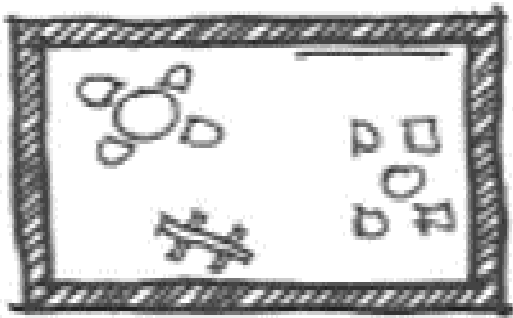


Openness / Enclosure



Openness

Depending on the circumstances, you may decide that a room does not need a door or even a couple of walls. This is related to issues not only of privacy, but also of wanting a feeling of openness and connection.

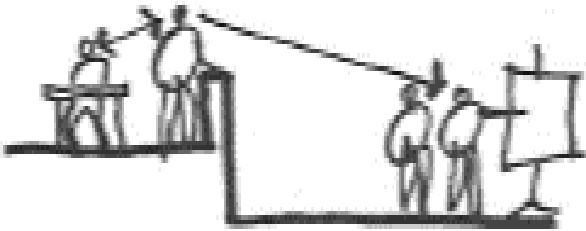


Enclosure

Even in the most open and inviting environments, there are usually spaces that require total enclosure, whether for security or privacy issues. Meeting rooms that need to provide good conditions for concentration and study, for instance, often must have four walls and a door.

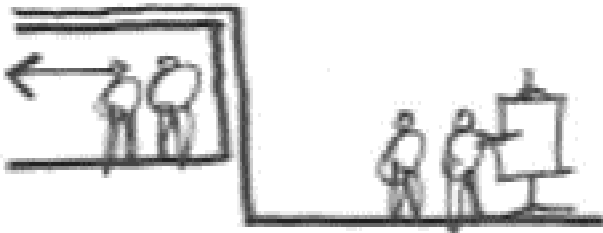


Integration / Segregation



Integration

Where adjacent functions exist, they may be arranged in ways that integrate them, such that, while maintaining their individual integrity, they connect and allow visual and even functional interaction.



Segregation

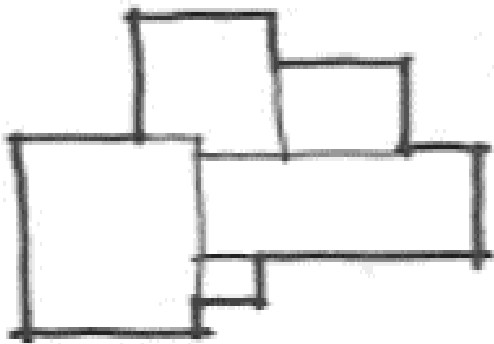
The elements separating one space from the next may intentionally discourage integration. A solid wall between the two space will often accomplish this. There are, however, several in – between options such as selective opening/closing of moveable walls.



Combination / Dispersion

Combination

Where multiple elements must all be present (such as rooms), depending on the circumstances, one may choose to bring them together as a cluster. This often produces economy of space (shared walls, fewer corridors) and allows for better residual space.



Dispersion

Sometimes, separating rooms and other elements is inevitable based on function and other needs, such as privacy and degree of autonomy. In this case, the elements are separated and dispersed within the overall setting.

